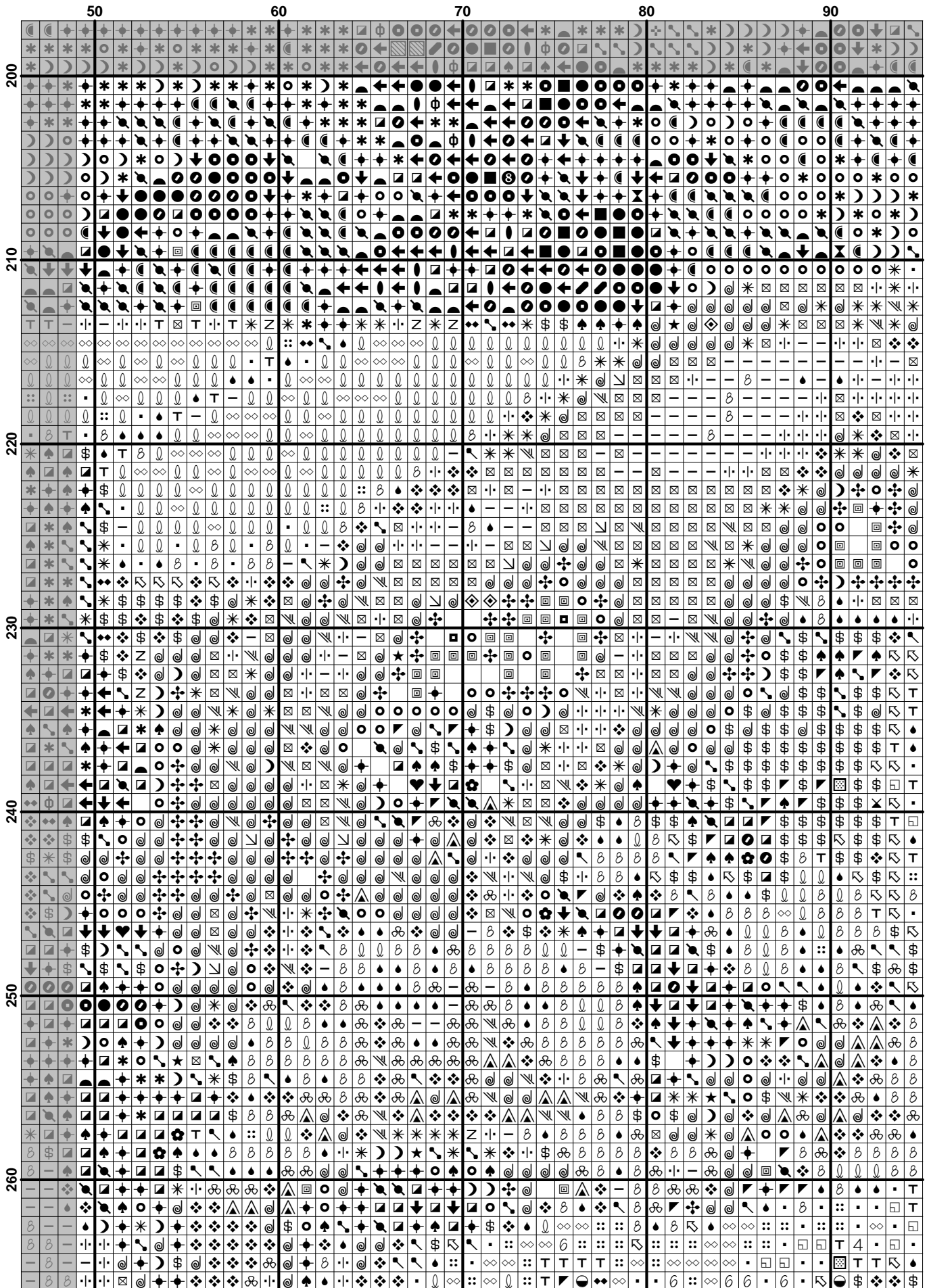
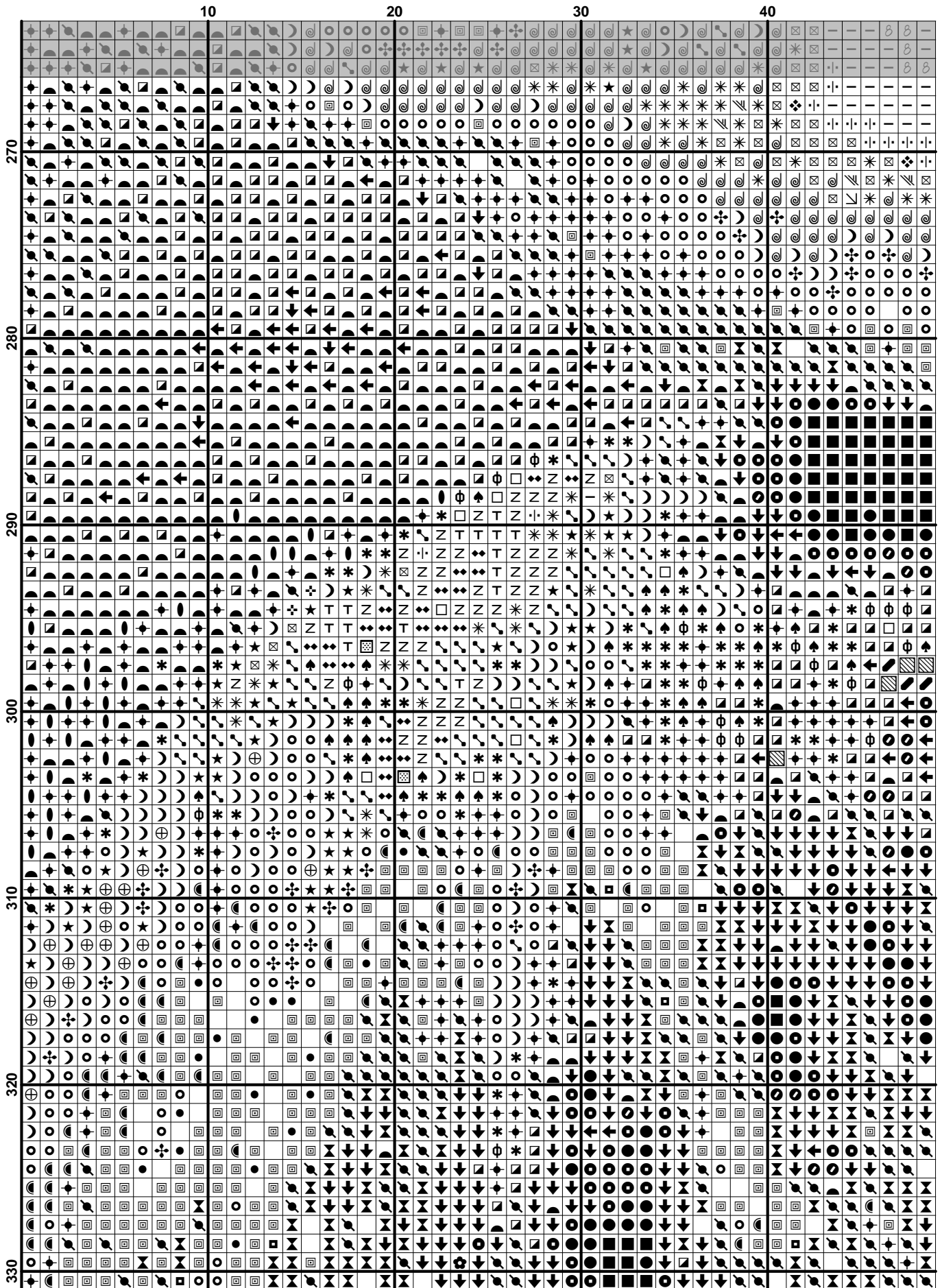


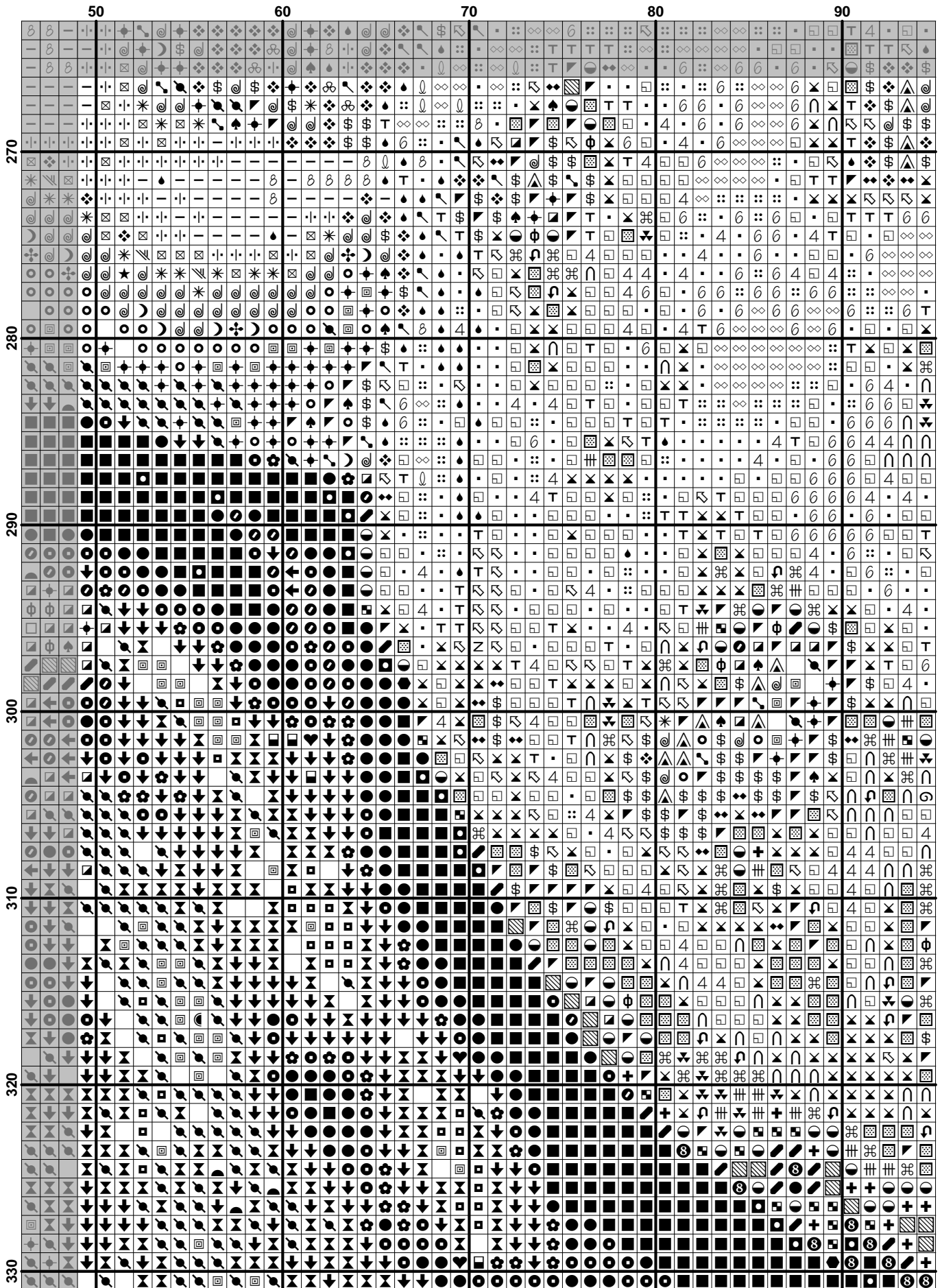
	100	110	120	130	140
140	⊗	⊗	⊗	⊗	⊗
141	⊗	⊗	⊗	⊗	⊗
142	⊗	⊗	⊗	⊗	⊗
143	⊗	⊗	⊗	⊗	⊗
144	⊗	⊗	⊗	⊗	⊗
145	⊗	⊗	⊗	⊗	⊗
146	⊗	⊗	⊗	⊗	⊗
147	⊗	⊗	⊗	⊗	⊗
148	⊗	⊗	⊗	⊗	⊗
149	⊗	⊗	⊗	⊗	⊗
150	⊗	⊗	⊗	⊗	⊗
151	⊗	⊗	⊗	⊗	⊗
152	⊗	⊗	⊗	⊗	⊗
153	⊗	⊗	⊗	⊗	⊗
154	⊗	⊗	⊗	⊗	⊗
155	⊗	⊗	⊗	⊗	⊗
156	⊗	⊗	⊗	⊗	⊗
157	⊗	⊗	⊗	⊗	⊗
158	⊗	⊗	⊗	⊗	⊗
159	⊗	⊗	⊗	⊗	⊗
160	⊗	⊗	⊗	⊗	⊗
161	⊗	⊗	⊗	⊗	⊗
162	⊗	⊗	⊗	⊗	⊗
163	⊗	⊗	⊗	⊗	⊗
164	⊗	⊗	⊗	⊗	⊗
165	⊗	⊗	⊗	⊗	⊗
166	⊗	⊗	⊗	⊗	⊗
167	⊗	⊗	⊗	⊗	⊗
168	⊗	⊗	⊗	⊗	⊗
169	⊗	⊗	⊗	⊗	⊗
170	⊗	⊗	⊗	⊗	⊗
171	⊗	⊗	⊗	⊗	⊗
172	⊗	⊗	⊗	⊗	⊗
173	⊗	⊗	⊗	⊗	⊗
174	⊗	⊗	⊗	⊗	⊗
175	⊗	⊗	⊗	⊗	⊗
176	⊗	⊗	⊗	⊗	⊗
177	⊗	⊗	⊗	⊗	⊗
178	⊗	⊗	⊗	⊗	⊗
179	⊗	⊗	⊗	⊗	⊗
180	⊗	⊗	⊗	⊗	⊗
181	⊗	⊗	⊗	⊗	⊗
182	⊗	⊗	⊗	⊗	⊗
183	⊗	⊗	⊗	⊗	⊗
184	⊗	⊗	⊗	⊗	⊗
185	⊗	⊗	⊗	⊗	⊗
186	⊗	⊗	⊗	⊗	⊗
187	⊗	⊗	⊗	⊗	⊗
188	⊗	⊗	⊗	⊗	⊗
189	⊗	⊗	⊗	⊗	⊗
190	⊗	⊗	⊗	⊗	⊗
191	⊗	⊗	⊗	⊗	⊗
192	⊗	⊗	⊗	⊗	⊗
193	⊗	⊗	⊗	⊗	⊗
194	⊗	⊗	⊗	⊗	⊗
195	⊗	⊗	⊗	⊗	⊗
196	⊗	⊗	⊗	⊗	⊗
197	⊗	⊗	⊗	⊗	⊗
198	⊗	⊗	⊗	⊗	⊗
199	⊗	⊗	⊗	⊗	⊗
200	⊗	⊗	⊗	⊗	⊗

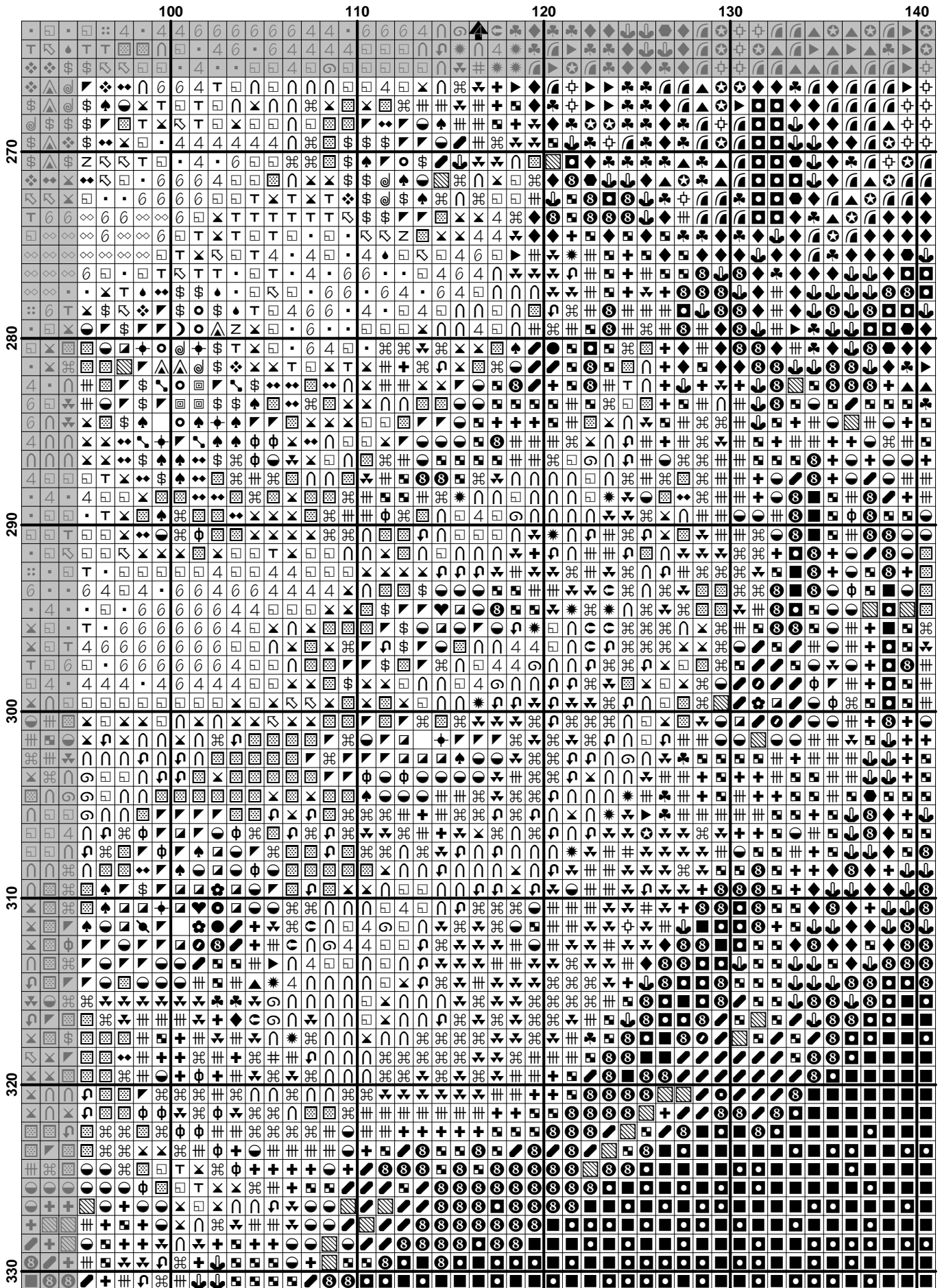


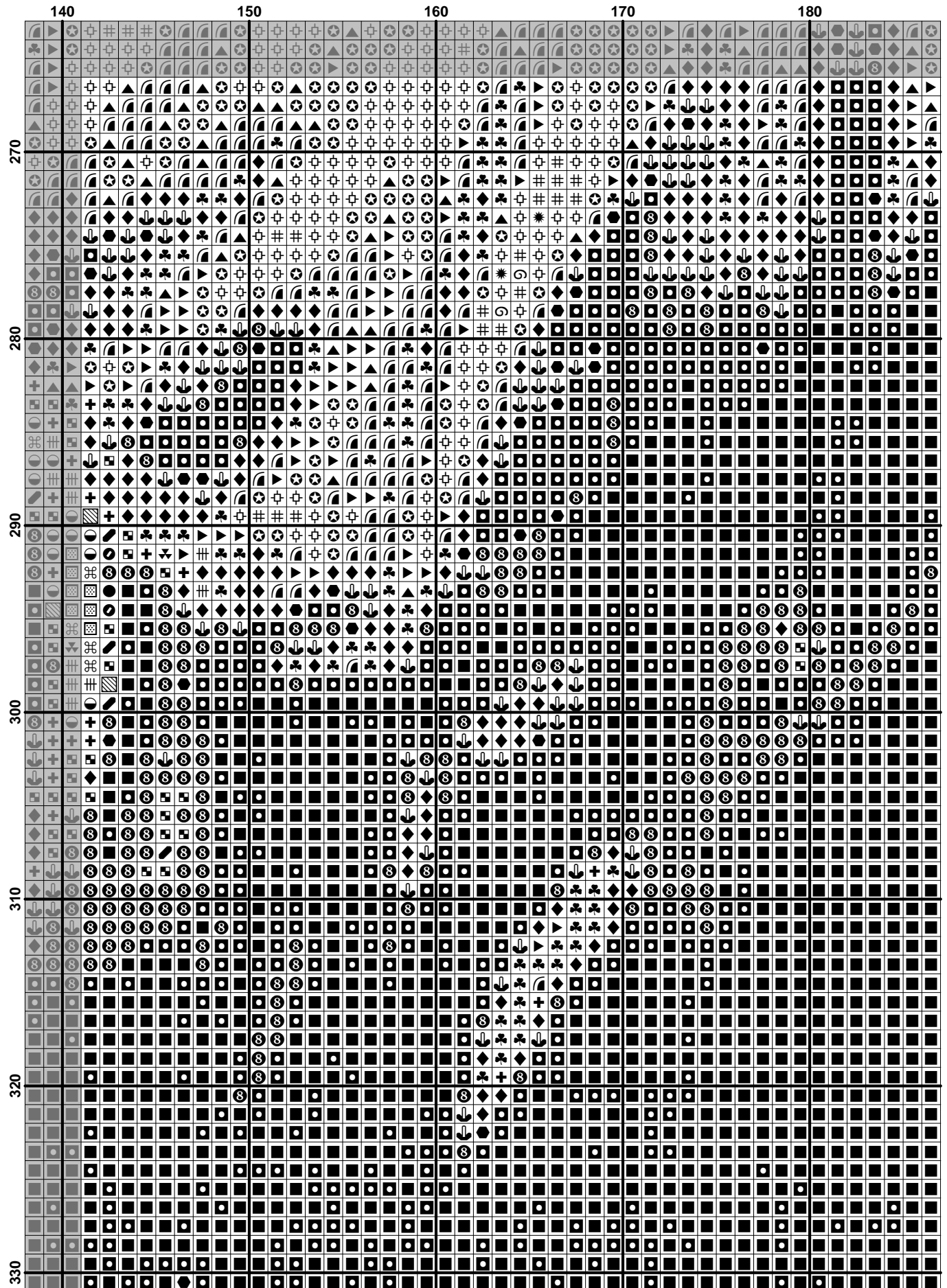
	100	110	120	130	140
200	↓	↓	↓	↓	↓
201	↓	↓	↓	↓	↓
202	↓	↓	↓	↓	↓
203	↓	↓	↓	↓	↓
204	↓	↓	↓	↓	↓
205	↓	↓	↓	↓	↓
206	↓	↓	↓	↓	↓
207	↓	↓	↓	↓	↓
208	↓	↓	↓	↓	↓
209	↓	↓	↓	↓	↓
210	↓	↓	↓	↓	↓
211	↓	↓	↓	↓	↓
212	↓	↓	↓	↓	↓
213	↓	↓	↓	↓	↓
214	↓	↓	↓	↓	↓
215	↓	↓	↓	↓	↓
216	↓	↓	↓	↓	↓
217	↓	↓	↓	↓	↓
218	↓	↓	↓	↓	↓
219	↓	↓	↓	↓	↓
220	↓	↓	↓	↓	↓
221	↓	↓	↓	↓	↓
222	↓	↓	↓	↓	↓
223	↓	↓	↓	↓	↓
224	↓	↓	↓	↓	↓
225	↓	↓	↓	↓	↓
226	↓	↓	↓	↓	↓
227	↓	↓	↓	↓	↓
228	↓	↓	↓	↓	↓
229	↓	↓	↓	↓	↓
230	↓	↓	↓	↓	↓
231	↓	↓	↓	↓	↓
232	↓	↓	↓	↓	↓
233	↓	↓	↓	↓	↓
234	↓	↓	↓	↓	↓
235	↓	↓	↓	↓	↓
236	↓	↓	↓	↓	↓
237	↓	↓	↓	↓	↓
238	↓	↓	↓	↓	↓
239	↓	↓	↓	↓	↓
240	↓	↓	↓	↓	↓
241	↓	↓	↓	↓	↓
242	↓	↓	↓	↓	↓
243	↓	↓	↓	↓	↓
244	↓	↓	↓	↓	↓
245	↓	↓	↓	↓	↓
246	↓	↓	↓	↓	↓
247	↓	↓	↓	↓	↓
248	↓	↓	↓	↓	↓
249	↓	↓	↓	↓	↓
250	↓	↓	↓	↓	↓
251	↓	↓	↓	↓	↓
252	↓	↓	↓	↓	↓
253	↓	↓	↓	↓	↓
254	↓	↓	↓	↓	↓
255	↓	↓	↓	↓	↓
256	↓	↓	↓	↓	↓
257	↓	↓	↓	↓	↓
258	↓	↓	↓	↓	↓
259	↓	↓	↓	↓	↓
260	↓	↓	↓	↓	↓
261	↓	↓	↓	↓	↓
262	↓	↓	↓	↓	↓
263	↓	↓	↓	↓	↓
264	↓	↓	↓	↓	↓
265	↓	↓	↓	↓	↓
266	↓	↓	↓	↓	↓
267	↓	↓	↓	↓	↓
268	↓	↓	↓	↓	↓
269	↓	↓	↓	↓	↓
270	↓	↓	↓	↓	↓
271	↓	↓	↓	↓	↓
272	↓	↓	↓	↓	↓
273	↓	↓	↓	↓	↓
274	↓	↓	↓	↓	↓
275	↓	↓	↓	↓	↓
276	↓	↓	↓	↓	↓
277	↓	↓	↓	↓	↓
278	↓	↓	↓	↓	↓
279	↓	↓	↓	↓	↓
280	↓	↓	↓	↓	↓
281	↓	↓	↓	↓	↓
282	↓	↓	↓	↓	↓
283	↓	↓	↓	↓	↓
284	↓	↓	↓	↓	↓
285	↓	↓	↓	↓	↓
286	↓	↓	↓	↓	↓
287	↓	↓	↓	↓	↓
288	↓	↓	↓	↓	↓
289	↓	↓	↓	↓	↓
290	↓	↓	↓	↓	↓
291	↓	↓	↓	↓	↓
292	↓	↓	↓	↓	↓
293	↓	↓	↓	↓	↓
294	↓	↓	↓	↓	↓
295	↓	↓	↓	↓	↓
296	↓	↓	↓	↓	↓
297	↓	↓	↓	↓	↓
298	↓	↓	↓	↓	↓
299	↓	↓	↓	↓	↓
300	↓	↓	↓	↓	↓

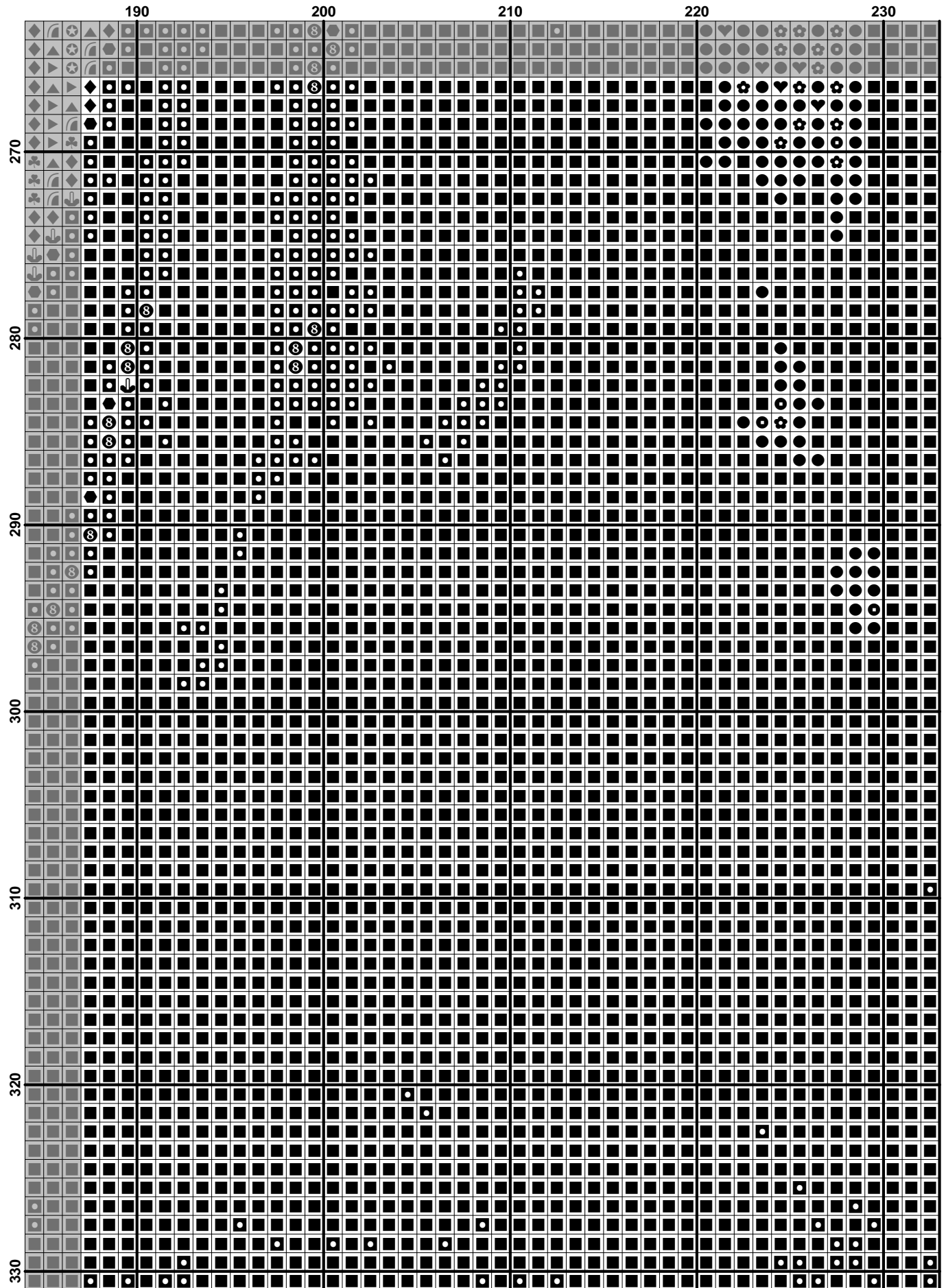
	140	150	160	170	180
200	+	+	+	+	+
201	+	+	+	+	+
202	+	+	+	+	+
203	+	+	+	+	+
204	+	+	+	+	+
205	+	+	+	+	+
206	+	+	+	+	+
207	+	+	+	+	+
208	+	+	+	+	+
209	+	+	+	+	+
210	+	+	+	+	+
211	+	+	+	+	+
212	+	+	+	+	+
213	+	+	+	+	+
214	+	+	+	+	+
215	+	+	+	+	+
216	+	+	+	+	+
217	+	+	+	+	+
218	+	+	+	+	+
219	+	+	+	+	+
220	+	+	+	+	+
221	+	+	+	+	+
222	+	+	+	+	+
223	+	+	+	+	+
224	+	+	+	+	+
225	+	+	+	+	+
226	+	+	+	+	+
227	+	+	+	+	+
228	+	+	+	+	+
229	+	+	+	+	+
230	+	+	+	+	+
231	+	+	+	+	+
232	+	+	+	+	+
233	+	+	+	+	+
234	+	+	+	+	+
235	+	+	+	+	+
236	+	+	+	+	+
237	+	+	+	+	+
238	+	+	+	+	+
239	+	+	+	+	+
240	+	+	+	+	+
241	+	+	+	+	+
242	+	+	+	+	+
243	+	+	+	+	+
244	+	+	+	+	+
245	+	+	+	+	+
246	+	+	+	+	+
247	+	+	+	+	+
248	+	+	+	+	+
249	+	+	+	+	+
250	+	+	+	+	+
251	+	+	+	+	+
252	+	+	+	+	+
253	+	+	+	+	+
254	+	+	+	+	+
255	+	+	+	+	+
256	+	+	+	+	+
257	+	+	+	+	+
258	+	+	+	+	+
259	+	+	+	+	+
260	+	+	+	+	+











Pattern Name: LUCIA
Fabric: Aida 22, White
 233w X 331h Stitches
Size: 22 Count, 26.90w X 38.22h cm

Floss Used for Full Stitches:

Symbol	Strands	Type	Number	Color
	2	DMC	152	Shell Pink-MD LT
	2	DMC	159	Gray Blue-LT
	2	DMC	160	Gray Blue-MD
	2	DMC	169	Pewter-LT
	2	DMC	224	Shell Pink-VY LT
	2	DMC	300	Mahogany-VY DK
	2	DMC	301	Mahogany-MD
	2	DMC	310	Black
	2	DMC	317	Pewter Gray
	2	DMC	318	Steel Gray-LT
	2	DMC	400	Mahogany-DK
	2	DMC	402	Mahogany-VY LT
	2	DMC	420	Hazelnut Brown-DK
	2	DMC	434	Brown-LT
	2	DMC	435	Brown-VY LT
	2	DMC	436	Tan
	2	DMC	469	Avocado Green
	2	DMC	471	Avocado Green-VY LT
	2	DMC	498	Christmas Red-DK
	2	DMC	500	Blue Green-VY DK
	2	DMC	501	Blue Green-DK
	2	DMC	517	Wedgewood-DK
	2	DMC	518	Wedgewood-LT
	2	DMC	520	Fern Green-DK
	2	DMC	524	Fern Green-VY LT
	2	DMC	597	Turquoise
	2	DMC	610	Drab Brown-DK
	2	DMC	612	Drab Brown-LT
	2	DMC	640	Beige Gray-VY DK
	2	DMC	647	Beaver Gray-MD
	2	DMC	648	Beaver Gray-LT
	2	DMC	721	Orange Spice-MD
	2	DMC	729	Old Gold-MD
	2	DMC	730	Olive Green-VY DK
	2	DMC	760	Salmon
	2	DMC	762	Pearl Gray-VY LT
	2	DMC	775	Baby Blue-VY LT
	2	DMC	778	Antique Mauve-VY LT
	2	DMC	793	Cornflower Blue-MD
	2	DMC	806	Peacock Blue-DK
	2	DMC	807	Peacock Blue
	2	DMC	814	Garnet-DK
	2	DMC	815	Garnet-MD
	2	DMC	817	Coral Red-VY DK
	2	DMC	819	Baby Pink-LT
	2	DMC	823	Navy Blue-DK
	2	DMC	900	Burnt Orange-DK
	2	DMC	902	Garnet-VY DK
	2	DMC	918	Red Copper-DK
	2	DMC	919	Red Copper
	2	DMC	921	Copper
	2	DMC	922	Copper-LT
	2	DMC	924	Gray Green--VY DK
	2	DMC	926	Gray Green-MD

Symbol	Strands	Type	Number	Color
	2	DMC	931	Antique Blue-MD
	2	DMC	932	Antique Blue-LT
	2	DMC	936	Avocado Green-VY DK
	2	DMC	938	Coffee Brown-UL DK
	2	DMC	939	Navy Blue-VY DK
	2	DMC	950	Desert Sand-LT
	2	DMC	961	Dusty Rose-DK
	2	DMC	976	Golden Brown-MD
	2	DMC	3012	Khaki Green-MD
	2	DMC	3031	Mocha Brown-VY DK
	2	DMC	3041	Antique Violet-MD
	2	DMC	3042	Antique Violet-LT
	2	DMC	3072	Beaver Gray-VY LT
	2	DMC	3325	Baby Blue-LT
	2	DMC	3354	Dusty Rose-LT
	2	DMC	3363	Pine Green-MD
	2	DMC	3364	Pine Green
	2	DMC	3371	Black Brown
	2	DMC	3713	Salmon-VY LT
	2	DMC	3727	Antique Mauve-LT
	2	DMC	3750	Antique Blue-VY DK
	2	DMC	3756	Baby Blue-UL VY LT
	2	DMC	3760	Wedgewood-MD
	2	DMC	3765	Peacock Blue-VY DK
	2	DMC	3766	Peacock Blue-LT
	2	DMC	3768	Gray Green-DK
	2	DMC	3771	Terra Cotta-UL VY LT
	2	DMC	3773	Desert Sand-MD
	2	DMC	3776	Mahogany-LT
	2	DMC	3778	Terra Cotta-LT
	2	DMC	3799	Pewter Gray-VY DK
	2	DMC	3808	Turquoise-UL VY DK
	2	DMC	3809	Turquoise-VY DK
	2	DMC	3828	Hazelnut Brown
	2	DMC	3829	Old Gold-VY DK
	2	DMC	3861	Cocoa-LT

Notes:

DIAGRAMA ARE 29pag
 NUMAR CULORI;90DMC
 DIMENSIUNI;24/33cm

Usage Summary

Strands Per Skein: 6

Skein Length: 795.0 cm

Type	Number	Full	Half	Quarter	Petite	Back(cm)	Str(cm)	Spec(cm)	French	Bead	Skein Est.
DMC	152	384	0	0	0	0.0	0.0	0.0	0	0	1.000
DMC	159	600	0	0	0	0.0	0.0	0.0	0	0	1.000
DMC	160	119	0	0	0	0.0	0.0	0.0	0	0	1.000
DMC	169	361	0	0	0	0.0	0.0	0.0	0	0	1.000
DMC	224	269	0	0	0	0.0	0.0	0.0	0	0	1.000
DMC	300	1607	0	0	0	0.0	0.0	0.0	0	0	1.000
DMC	301	1172	0	0	0	0.0	0.0	0.0	0	0	1.000
DMC	310	10030	0	0	0	0.0	0.0	0.0	0	0	3.000
DMC	317	218	0	0	0	0.0	0.0	0.0	0	0	1.000
DMC	318	417	0	0	0	0.0	0.0	0.0	0	0	1.000
DMC	400	1217	0	0	0	0.0	0.0	0.0	0	0	1.000
DMC	402	421	0	0	0	0.0	0.0	0.0	0	0	1.000
DMC	420	969	0	0	0	0.0	0.0	0.0	0	0	1.000
DMC	434	840	0	0	0	0.0	0.0	0.0	0	0	1.000
DMC	435	743	0	0	0	0.0	0.0	0.0	0	0	1.000
DMC	436	556	0	0	0	0.0	0.0	0.0	0	0	1.000
DMC	469	517	0	0	0	0.0	0.0	0.0	0	0	1.000
DMC	471	54	0	0	0	0.0	0.0	0.0	0	0	1.000
DMC	498	625	0	0	0	0.0	0.0	0.0	0	0	1.000
DMC	500	1235	0	0	0	0.0	0.0	0.0	0	0	1.000
DMC	501	316	0	0	0	0.0	0.0	0.0	0	0	1.000
DMC	517	200	0	0	0	0.0	0.0	0.0	0	0	1.000
DMC	518	318	0	0	0	0.0	0.0	0.0	0	0	1.000
DMC	520	296	0	0	0	0.0	0.0	0.0	0	0	1.000
DMC	524	359	0	0	0	0.0	0.0	0.0	0	0	1.000
DMC	597	157	0	0	0	0.0	0.0	0.0	0	0	1.000
DMC	610	661	0	0	0	0.0	0.0	0.0	0	0	1.000
DMC	612	673	0	0	0	0.0	0.0	0.0	0	0	1.000
DMC	640	345	0	0	0	0.0	0.0	0.0	0	0	1.000
DMC	647	288	0	0	0	0.0	0.0	0.0	0	0	1.000
DMC	648	491	0	0	0	0.0	0.0	0.0	0	0	1.000
DMC	721	57	0	0	0	0.0	0.0	0.0	0	0	1.000
DMC	729	268	0	0	0	0.0	0.0	0.0	0	0	1.000
DMC	730	849	0	0	0	0.0	0.0	0.0	0	0	1.000
DMC	760	239	0	0	0	0.0	0.0	0.0	0	0	1.000
DMC	762	312	0	0	0	0.0	0.0	0.0	0	0	1.000
DMC	775	1033	0	0	0	0.0	0.0	0.0	0	0	1.000
DMC	778	322	0	0	0	0.0	0.0	0.0	0	0	1.000
DMC	793	14	0	0	0	0.0	0.0	0.0	0	0	1.000
DMC	806	419	0	0	0	0.0	0.0	0.0	0	0	1.000
DMC	807	504	0	0	0	0.0	0.0	0.0	0	0	1.000
DMC	814	2113	0	0	0	0.0	0.0	0.0	0	0	1.000
DMC	815	1164	0	0	0	0.0	0.0	0.0	0	0	1.000
DMC	817	466	0	0	0	0.0	0.0	0.0	0	0	1.000
DMC	819	1106	0	0	0	0.0	0.0	0.0	0	0	1.000
DMC	823	170	0	0	0	0.0	0.0	0.0	0	0	1.000
DMC	900	890	0	0	0	0.0	0.0	0.0	0	0	1.000
DMC	902	942	0	0	0	0.0	0.0	0.0	0	0	1.000
DMC	918	452	0	0	0	0.0	0.0	0.0	0	0	1.000
DMC	919	2610	0	0	0	0.0	0.0	0.0	0	0	1.000
DMC	921	1628	0	0	0	0.0	0.0	0.0	0	0	1.000
DMC	922	394	0	0	0	0.0	0.0	0.0	0	0	1.000
DMC	924	384	0	0	0	0.0	0.0	0.0	0	0	1.000
DMC	926	371	0	0	0	0.0	0.0	0.0	0	0	1.000
DMC	931	280	0	0	0	0.0	0.0	0.0	0	0	1.000

Type	Number	Full	Half	Quarter	Petite	Back(cm)	Str(cm)	Spec(cm)	French	Bead	Skein	Est.
DMC	932	347	0	0	0	0.0	0.0	0.0	0	0	1.000	
DMC	936	777	0	0	0	0.0	0.0	0.0	0	0	1.000	
DMC	938	684	0	0	0	0.0	0.0	0.0	0	0	1.000	
DMC	939	1679	0	0	0	0.0	0.0	0.0	0	0	1.000	
DMC	950	792	0	0	0	0.0	0.0	0.0	0	0	1.000	
DMC	961	53	0	0	0	0.0	0.0	0.0	0	0	1.000	
DMC	976	36	0	0	0	0.0	0.0	0.0	0	0	1.000	
DMC	3012	653	0	0	0	0.0	0.0	0.0	0	0	1.000	
DMC	3031	179	0	0	0	0.0	0.0	0.0	0	0	1.000	
DMC	3041	185	0	0	0	0.0	0.0	0.0	0	0	1.000	
DMC	3042	211	0	0	0	0.0	0.0	0.0	0	0	1.000	
DMC	3072	872	0	0	0	0.0	0.0	0.0	0	0	1.000	
DMC	3325	696	0	0	0	0.0	0.0	0.0	0	0	1.000	
DMC	3354	94	0	0	0	0.0	0.0	0.0	0	0	1.000	
DMC	3363	348	0	0	0	0.0	0.0	0.0	0	0	1.000	
DMC	3364	411	0	0	0	0.0	0.0	0.0	0	0	1.000	
DMC	3371	3451	0	0	0	0.0	0.0	0.0	0	0	1.000	
DMC	3713	598	0	0	0	0.0	0.0	0.0	0	0	1.000	
DMC	3727	80	0	0	0	0.0	0.0	0.0	0	0	1.000	
DMC	3750	532	0	0	0	0.0	0.0	0.0	0	0	1.000	
DMC	3756	12495	0	0	0	0.0	0.0	0.0	0	0	4.000	
DMC	3760	483	0	0	0	0.0	0.0	0.0	0	0	1.000	
DMC	3765	479	0	0	0	0.0	0.0	0.0	0	0	1.000	
DMC	3766	893	0	0	0	0.0	0.0	0.0	0	0	1.000	
DMC	3768	359	0	0	0	0.0	0.0	0.0	0	0	1.000	
DMC	3771	1012	0	0	0	0.0	0.0	0.0	0	0	1.000	
DMC	3773	441	0	0	0	0.0	0.0	0.0	0	0	1.000	
DMC	3776	673	0	0	0	0.0	0.0	0.0	0	0	1.000	
DMC	3778	1109	0	0	0	0.0	0.0	0.0	0	0	1.000	
DMC	3799	199	0	0	0	0.0	0.0	0.0	0	0	1.000	
DMC	3808	685	0	0	0	0.0	0.0	0.0	0	0	1.000	
DMC	3809	484	0	0	0	0.0	0.0	0.0	0	0	1.000	
DMC	3828	791	0	0	0	0.0	0.0	0.0	0	0	1.000	
DMC	3829	478	0	0	0	0.0	0.0	0.0	0	0	1.000	
DMC	3861	419	0	0	0	0.0	0.0	0.0	0	0	1.000	